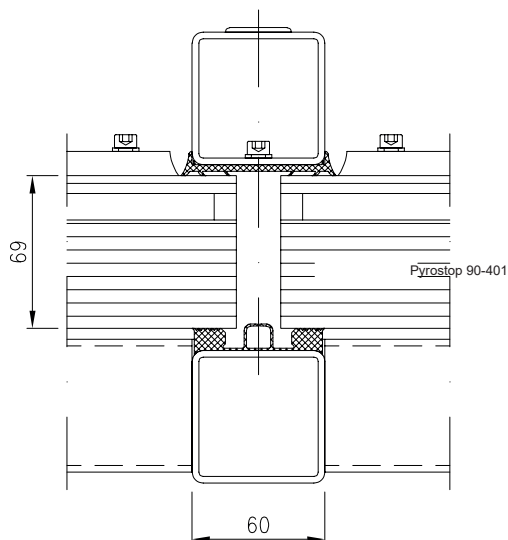


Fertigbauteil Brandschutz-Oberlicht OFF90

Feuerwiderstandsklasse F90



Wärmedurchgangswerte:

U_f (Profile) = $1,5 \text{ W/m}^2\text{K}$

U_g (Glas) = $1,1 \text{ W/m}^2\text{K}$

Glas:

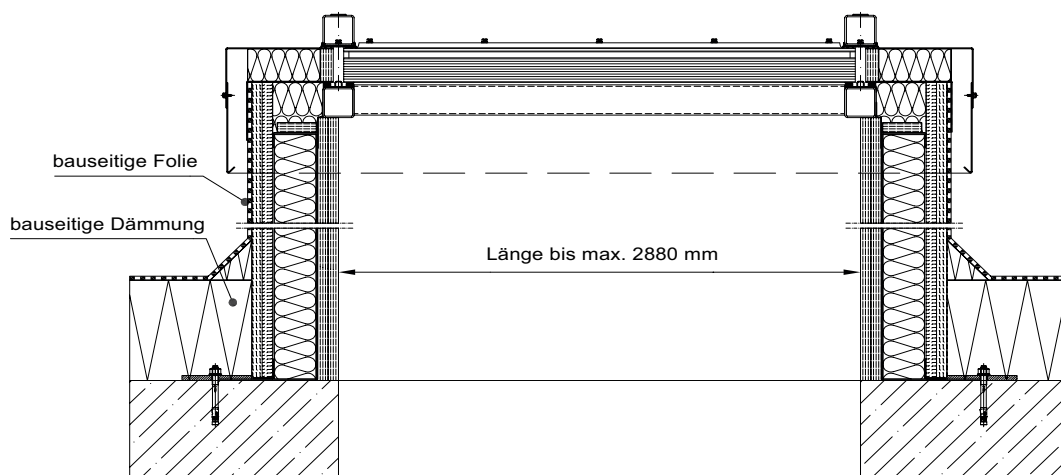
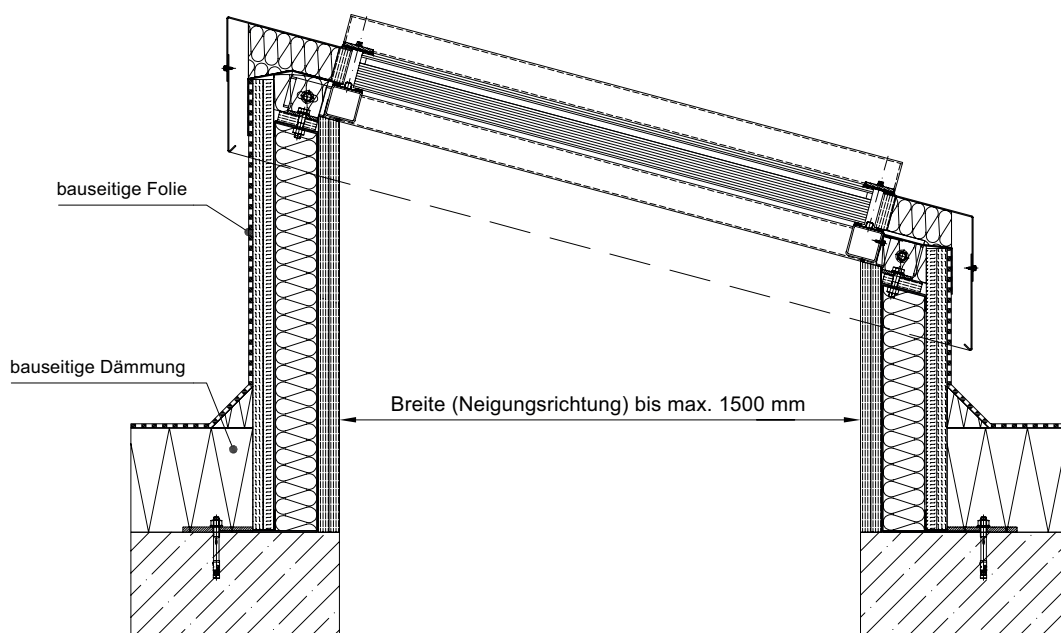
maximale Scheibengröße = $1200 \text{ mm} \times 2400 \text{ mm}$

Scheibengewicht = 134 kg/m^2

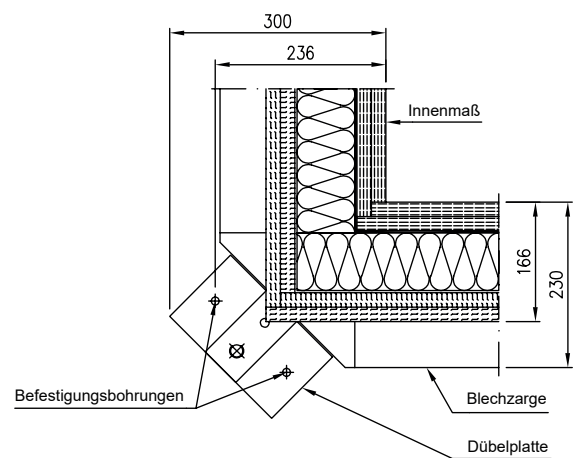
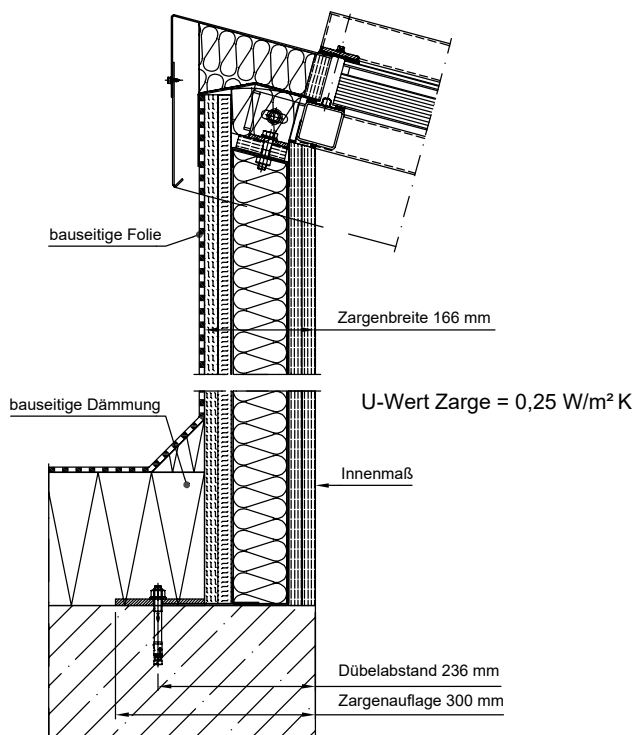
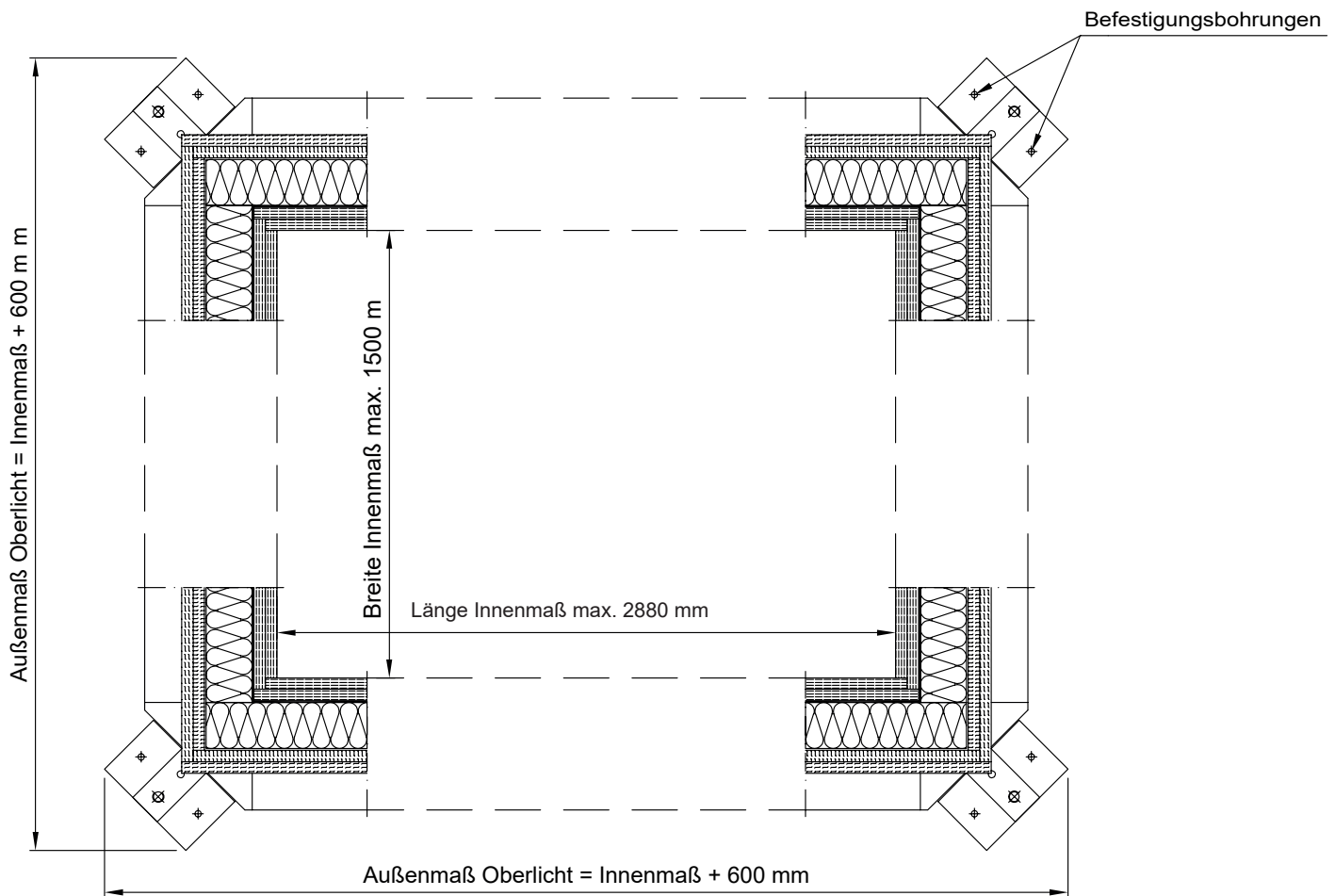
Dicke = 69 mm

Schallschutz R_w -Wert = 46 dB

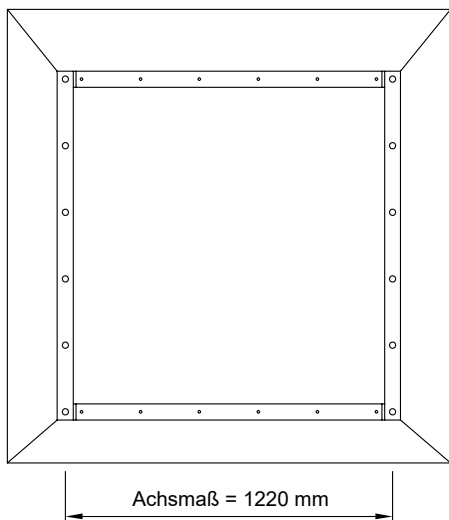
Angrenzende Bauteile: Beton / Stahlbeton
Mauerwerk
bekleidete Stahlbauteile



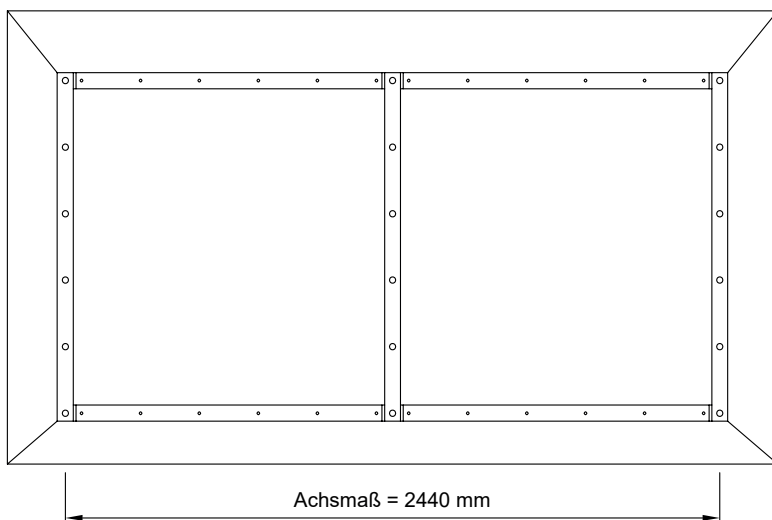
Fertigbauteil Brandschutz-Oberlicht OFF90



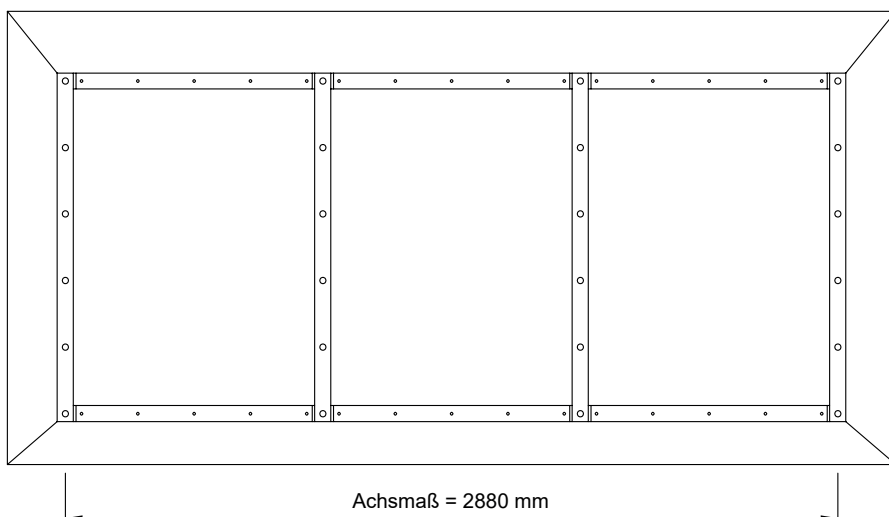
Fertigbauteil Brandschutz-Oberlicht OFF90



Für 1-scheibige Verglasung
max. Achsmaß = 1220 mm



Für 2-scheibige Verglasung
max. Achsmaß = 2440 mm



Für 3-scheibige Verglasung
max. Achsmaß = 2880 mm